



Shaler Area School District

## SCOTT PRIMARY SCHOOL



Project Progress  
February 23, 2018



# MEP's Continue



**Massaro**  
CM SERVICES, LLC



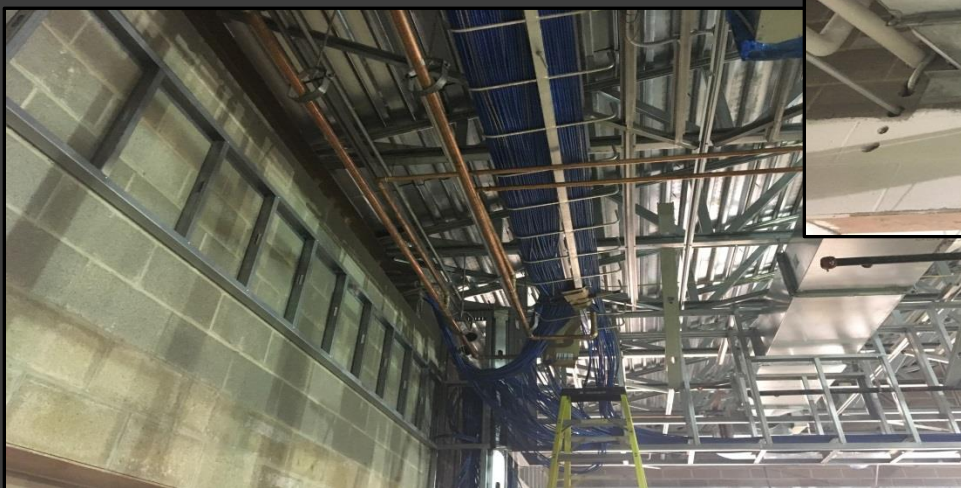
# Boiler Flu



**Massaro**  
CM SERVICES, LLC



# Tele Data Continues



**Massaro**  
CM SERVICES, LLC



# Interior Masonry Continues



**Massaro**  
CM SERVICES, LLC



# Drywall Continues



**Massaro**  
CM SERVICES, LLC



# Drywall Continues



**Massaro**  
CM SERVICES, LLC



# Painting has Begun



**Massaro**  
CM SERVICES, LLC



# Ceramic Tile has Started In the Gang Bathrooms



**Massaro**  
CM SERVICES, LLC



# Gymnasium



**Massaro**  
CM SERVICES, LLC



# Stage @ Cafeteria





# Gutters/Downspouts & Soffit/Fascia Continue



**Massaro**  
CM SERVICES, LLC



# 100 Days with out a Recordable Accident!



**Massaro**  
CM SERVICES, LLC



# North Elevation View

February 23, 2018



**Massaro**  
CM SERVICES, LLC



# South Elevation View

February 23, 2018



**Massaro**  
CM SERVICES, LLC



# South Elevation View

February 23, 2018



**Massaro**  
CM SERVICES, LLC



# Pull Planning

## Week of February 19, 2018

PRIME	MON.	TUES.	WED.	THUR.	FRI.	S.O.G.
A-1 SARGENT	- Area C Admin Wall Asst - Cabies 1 <sup>st</sup> Fl A/B	Gym U.G.			→	Begin UG in gym
NELLO	- Roof & Wall Blocking - GRF PAINTING	PA - SOFFIT/FINISH A/B Area C ROOF - FINISH Gym Wall opening	Gravel/Graze Gym	→ → →	→ → →	- Area A/B Dried in - Resume Area C Roof - Seams son P&P in gym
RAM	- Wall Bored 1 <sup>st</sup> Fl A/B - Ringlet G/F 1 <sup>st</sup> Fl A/B	- Finish GR F.			→	Resume T/F GR F P&S
HARRIS	- PORTICO BRICK	- A/B GR F. Patching - BRICK C/D st CORNER - Wash Down West Side Gym	- GUD @ Gym Wall Opening	→ →	→ →	- Finish PORTICO BRICK - Ditch BRICK N. Wall Gym - GUD " " " "
VABEL	- H <sub>2</sub> O Lines C/P				→	- Cont. H <sub>2</sub> O LINES IN
HRANEC	- TUBE Piping (ATTIC) - AREA B DUCT IN CLASSROOMS	→	- Area C Admin	→ →	→ →	- BEGIN ADMIN DUCT
EAST WEST	- Complete VAV CONNECTIONS - RT Piping IN C	→	- Ceiling KNIVES GO R/1 <sup>st</sup> Fl	→ →	→ →	- Comp/ok VAV COND'S





# NEW PRIMARY SCHOOL ON SCOTT AVE.

Scheduled Work for Upcoming Weeks

- Continue MEP Systems
- Interior CMU
- Interior Drywall
- Interior Ceramic
- Interior Painting
- Roofing

